

Item No.:	_____	Qty.:	_____
Model No.:	_____		
Project No.:	_____		

## Super Economy Series Hand Sink

*Super Economy 17" Hand Sink, Wall Mounted*



SEHS-17X

### Features

- 20 Gauge, 300 series stainless steel
- 6" Backsplash with 2" return
- Goose neck faucet included
- 1-1/2" Drain opening
- Strainer and faucet included
- Z-clip mounting bracket
- Easy to clean and sanitize

### Options

- Side Splashes
- Faucet Upgrade
- Apron Skirt
- P-Trap
- Overflow

### Materials

- Sink & Bowl: 20 gauge, 300 series stainless steel
- Top: Backsplash is 20 gauge, 300 series stainless steel

### Mechanical

- 1-1/8" (29mm) faucet holes on 4" (102mm) centers
- 1-1/2" (38mm) waste drain opening

### Flyer Product

*In keeping with our policy of continuing product improvement, Elkay SSP reserves the right to change product specifications without notice.*



**AUTOQUOTES**



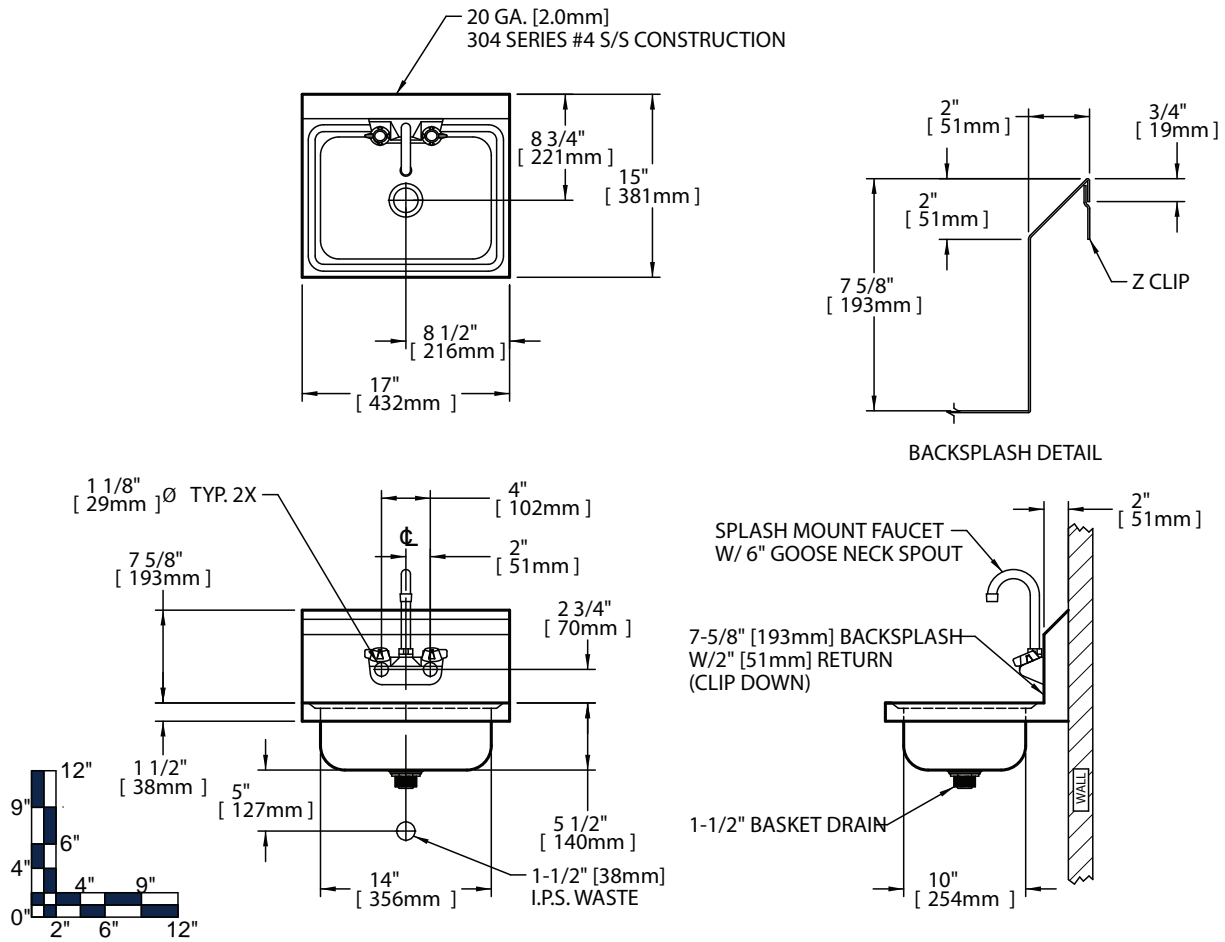
*This specification describes an Elkay SSP product with design, quality and functional benefits to the user. When making a comparison of other producers' offerings, be certain these features are not overlooked.*

**Elkay SSP**  
421 N. Freya St.  
Spokane, WA 99205  
Phone: 800-726-0553 Fax: 509-535-1493

Website: [www.sspinc.net](http://www.sspinc.net)  
Email: [sspsales@elkay.com](mailto:sspsales@elkay.com)  
©2011 Elkay



Item No.: \_\_\_\_\_ Qty.: \_\_\_\_\_  
 Model No.: \_\_\_\_\_  
 Project No.: \_\_\_\_\_



Economy Hand Sinks																
	Bowl Dimensions						Overall Size				Drain Location		Weight			
	Width		Front-to-Back		Depth		Width		Front-to-Back		Height		DL		lbs.	kg
	A	mm	B	mm	D	mm	L	mm	W	mm	H	mm	DL	mm		
SEHS - 17 - X	14	356	10	254	5	127	17	432	15	381	11.0	279	8.5	216	11	5

\* Custom sizes also available

